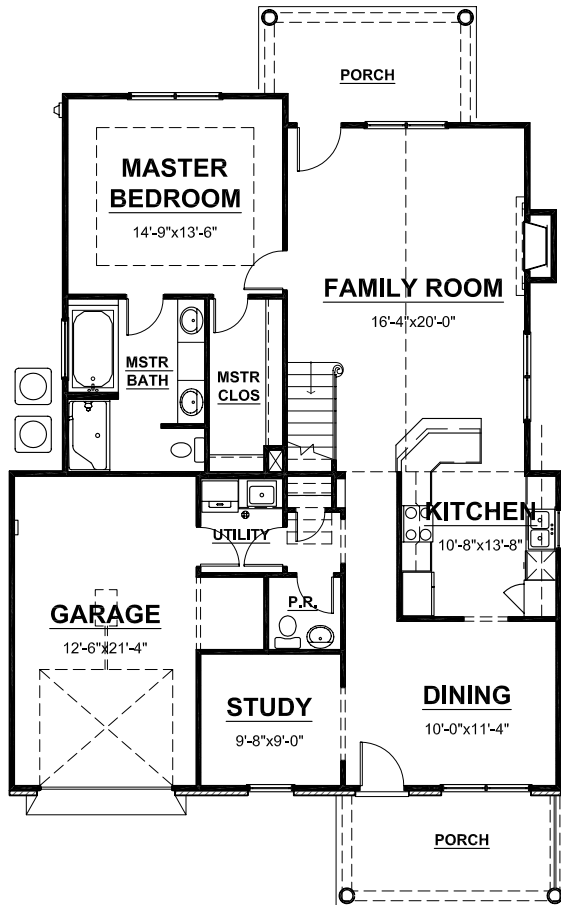


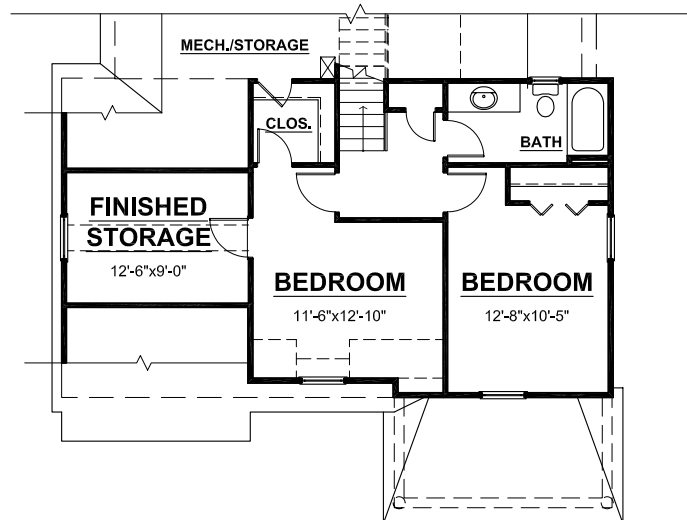
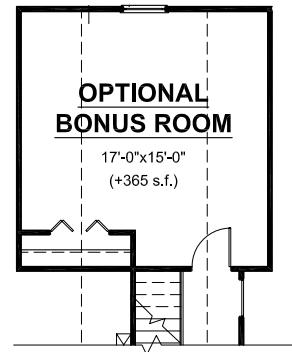
The Villas at Fiddlers Green



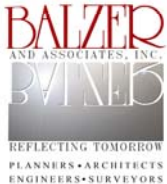
The Raegan II



FIRST FLOOR



SECOND FLOOR



APPROX. SQUARE FOOTAGE

FIRST FLOOR FINISHED=	1,345 s.f.
SECOND FLOOR FINISHED=	676 s.f.
TOTAL FINISHED=	2,021 s.f.
GARAGE=	303 s.f.

NOTES:

- 1) INFORMATION DEEMED RELIABLE BUT NOT GUARANTEED.
- 2) PRICES ARE SUBJECT TO CHANGE WITHOUT NOTICE.
- 3) ROOM SIZES ARE NOT GUARANTEED.
- 4) SQUARE FOOTAGE SHOWN IS APPROXIMATE.

