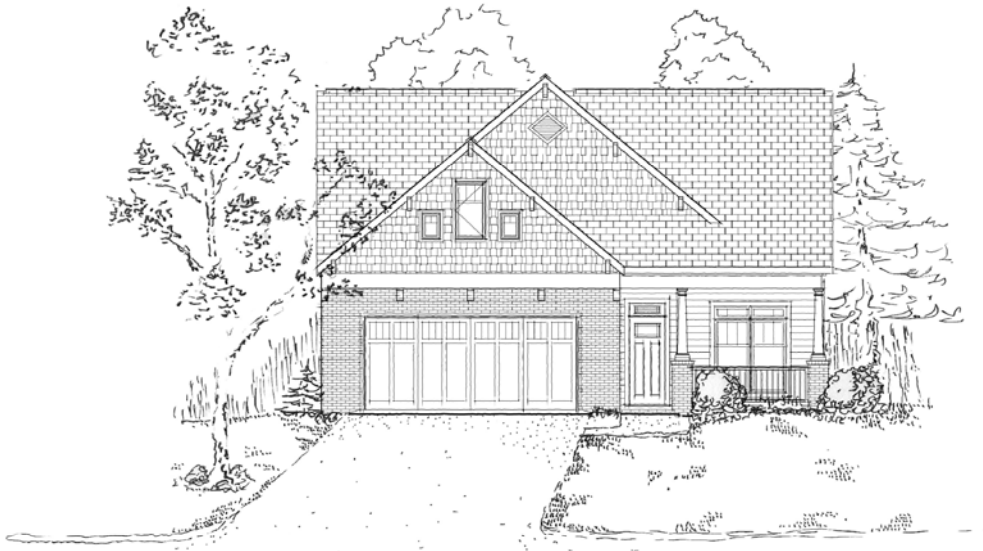
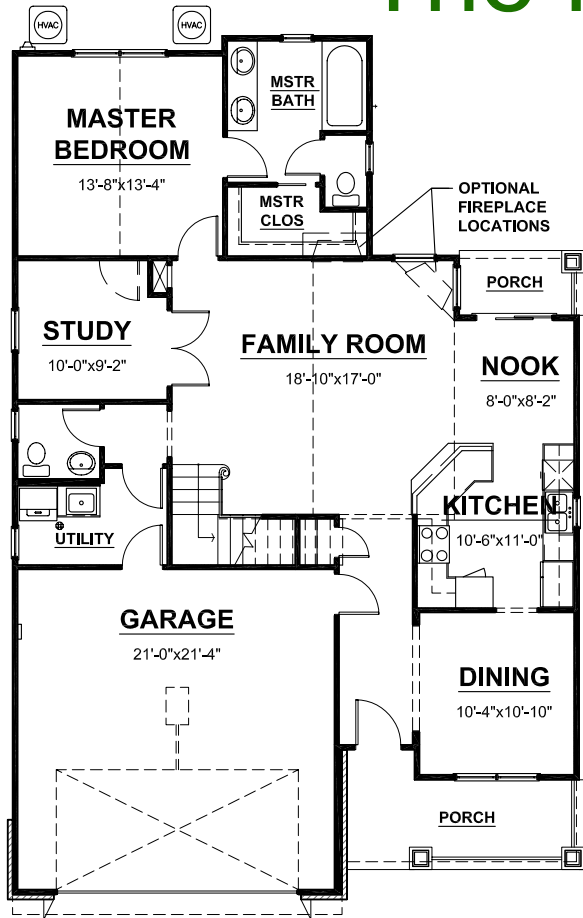


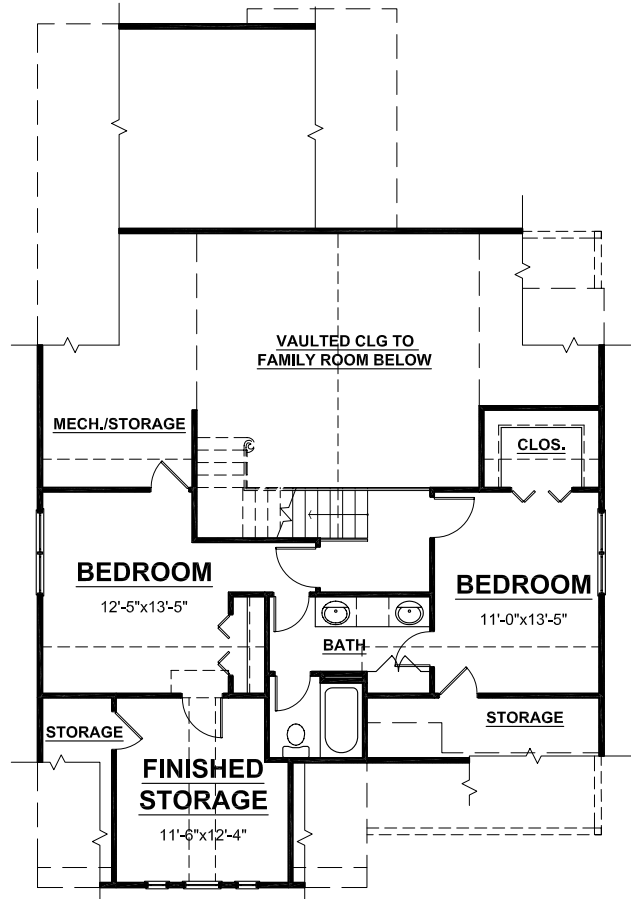
# The Villas at Fiddlers Green



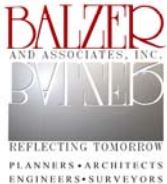
## The Nolan II



**FIRST FLOOR**



**SECOND FLOOR**

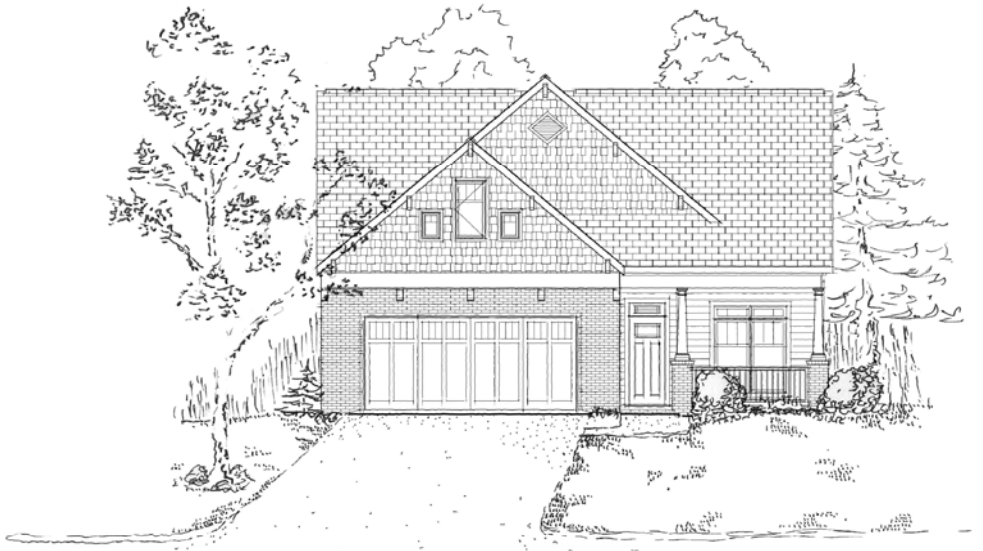


APPROX. SQUARE FOOTAGE	
FIRST FLOOR FINISHED=	1,318 s.f.
SECOND FLOOR FINISHED=	751 s.f.
TOTAL FINISHED=	2,069 s.f.
GARAGE=	471 s.f.

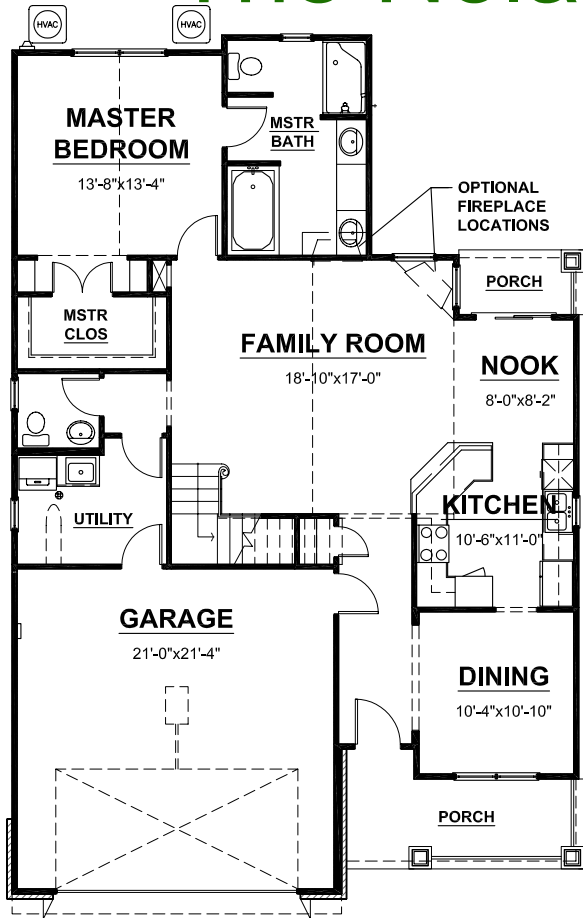
- NOTES:
- 1) INFORMATION DEEMED RELIABLE BUT NOT GUARANTEED.
  - 2) PRICES ARE SUBJECT TO CHANGE WITHOUT NOTICE.
  - 3) ROOM SIZES ARE NOT GUARANTEED.
  - 4) SQUARE FOOTAGE SHOWN IS APPROXIMATE.



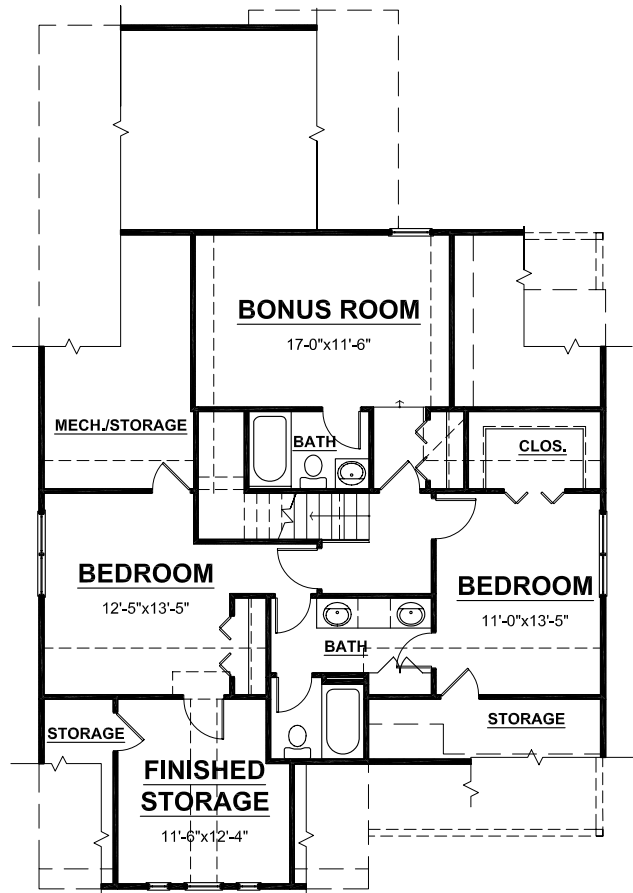
# The Villas at Fiddlers Green



## The Nolan II Options



**FIRST FLOOR w/ OPT. MSTR. SUITE**



**SECOND FLOOR w/ OPT. BONUS ROOM**



APPROX. SQUARE FOOTAGE	
FIRST FLOOR FINISHED=	1,318 s.f.
SECOND FLOOR FINISHED=	1,064 s.f.
TOTAL FINISHED=	2,382 s.f.
GARAGE=	471 s.f.

- NOTES:
- 1) INFORMATION DEEMED RELIABLE BUT NOT GUARANTEED.
  - 2) PRICES ARE SUBJECT TO CHANGE WITHOUT NOTICE.
  - 3) ROOM SIZES ARE NOT GUARANTEED.
  - 4) SQUARE FOOTAGE SHOWN IS APPROXIMATE.

